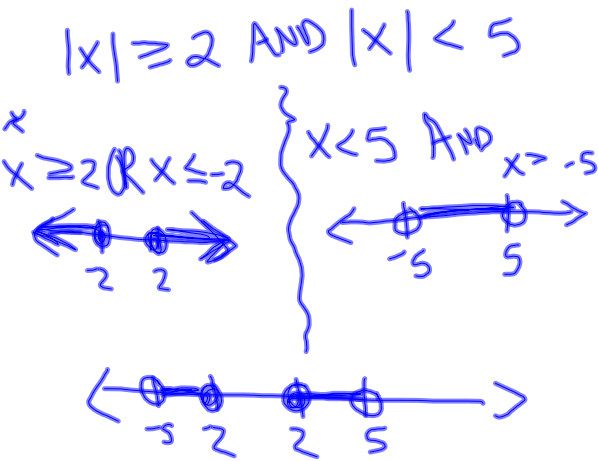


Compound Absolute values  
and  
Double Absolute Value Inequalities

Aug 25-11:52 AM

Just Watch!

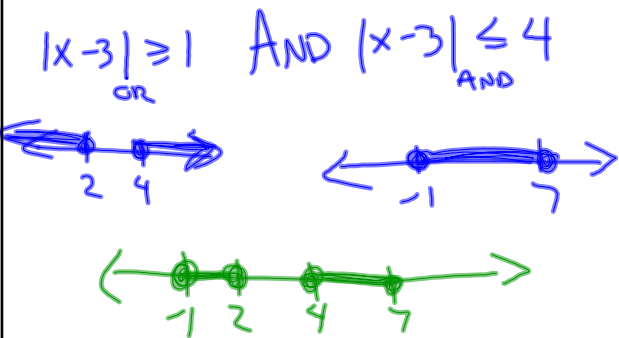
$2 \leq |x| < 5$



Aug 25-11:54 AM

example:

$1 \leq |x-3| \leq 4$

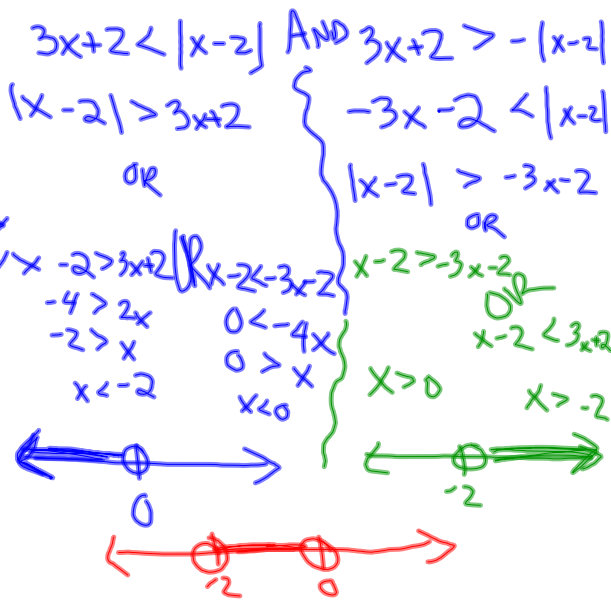


Aug 25-11:54 AM

Double Absolute Value

ex:  $|3x + 2| < |x - 2|$

Start  
on LEFT



Aug 25-12:00 PM